

THE
ROCKHOUNDER

HAPPY
HOLIDAYS

DECEMBER
2012

PURPOSE: The purpose of the Gem, Lapidary, and Mineral Society of Montgomery County MD., Inc. is “To increase knowledge and popular interest in earth sciences, geology, mineralogy, paleontology, lapidary arts, and related subjects”.

REGULAR MEETING: Meetings are held the 2nd Monday of the month from September to June. The Society will meet on **Monday December 10th** in the dining room of the Rockville Senior Center, 1150 Carnation Drive, Rockville. A short business meeting will begin at 7:45 pm but the room is available to us at 7:30 pm so come early and chat with old friends and help us set up for the PARTY!. **NO SHOW TABLE THIS MONTH.** There will be no speaker for this meeting because this will be the SWAP/SELL and social evening. You may bring only hobby related items to swap or sell. Space is limited and we need some tables for refreshments, so bring no more than an amount that will fit on one table. It is possible that tables will have to be shared. There WILL be a prize drawing in December.

REFRESHMENTS This is the only meeting of the year when we have refreshments. PLEASE BRING COOKIES, CAKE, CRACKERS, or CANDY (Or VEGGIES for those who insist on healthy eating) to share. Goodies should be “finger food”. Napkins, cups, plates, punch, coffee, tea, and hot chocolate will be provided. Come and have a good time. As usual, visitors are welcome. Remember that WE MUST VACATE THE BUILDING by 10:00 pm and the tables and chairs must be cleaned and put back where we find them. If EVERYONE helps, it is not a big chore.

THE BOARD OF DIRECTORS will **NOT** meet in December.



WELCOME NEW MEMBERS

MANGELSON, Hal & Marilyn, 812 Cliftonbrook Lane, Silver Spring MD
20905-3709, 508 697 7286, mmangel5@comcast.net.
SPENCER, Kendrick, 618 Seaton Square, Silver Spring MD 20901-4500,
240 687 6609, spencer6819@live.com.

WEATHER ALERT

SNOW CONTINGENCY

Reminder: If schools in Montgomery County MD are cancelled, or let out early, because of weather on the day of a scheduled Society meeting, we will have no meeting. Call the Society President or a Board Member (Numbers on the back of the ROCKHOUNDER) if in doubt.



IN THIS ISSUE

- Meetings, New Members, Weather Alert.....1
- President’s Message, Wildacres Scholarship, 2013 Officers.....2
- Regular Meeting Minutes.....3
- Board Mtg. Minutes, New Editor.....4
- Field Trips, Postal Rate Increase.....5
- FRA, Fluorescent Labels.....6
- Mini Miners.....7
- Show Table.....8
- Shows and Events.....9
- Society Library, Fossil Auction, 2012 EFMLS Convention & Show, Safety.....10
- Web Sites, Daffy - nitions.....11
- You Can’t Take it With You, Field Trips for 2012.....12
- 2012 Field Trips (Cont’d).....13

DEADLINE for The January 2013
Rockhounder: December 27th

PRESIDENT'S MESSAGE

By Andy Celmer

Happy Holidays my fellow Rockhounds,

December marks the final issue of our newsletter by our illustrious and award winning Editor Wendell Mohr. I want to thank Wendell for his many years of service as our editor, my mentor and a clearinghouse for all the information and requests that come into our club. The information and requests come through our P.O. Box, the Society's Web Site, Wendell's email and phone. It seems everyone knows how to find and communicate with Wendell. He has gone to people's homes to access potential donations, helps in picking up, storing and prepping materials for sale. His institutional memory is invaluable to the day to day running of the club. He knows who's who in the greater organization as well as the many times we have reinvented the wheel, along with its outcome. He is also tall enough to see bad weather coming, before the rest of us and he knows where all the bodies are buried. I was amazed when he told me the location of Jimmy Hoffa, I would have never guessed. So tell our own Rockhound of the Year, thanks for all his hard work.

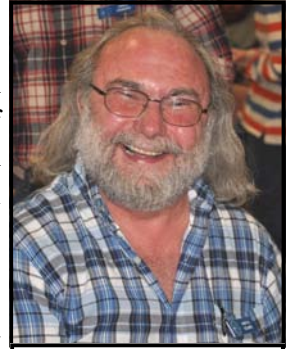


Photo by W. Mohr

And thanks to all of you who make this club happen!

The torch is passed to Kristin Lolmaugh, our new Newsletter Editor. Kristin has stepped up to the plate and we are thankful for her actions. She will be creating an electronic only newsletter, so we are looking for someone to make hard copies and mail them to members without email. (From pdf copy, make a hard copy, get duplicated, fold copies, tape, stamp, print and add address labels from existing list for mailing and deliver to the Post Office. - About 2 hours per month.)

We also need a Show Demonstration Coordinator. The job involves contacting a list of previous demonstrators to confirm their participation and seeking out new participants based on the criteria of club related demonstrations.

As always, the member who volunteers to do a job will do it as she/he sees fit.

See you at the Holiday Party, Andy B



GLMSMC SCHOLARSHIP Our Board offers one scholarship annually to a Society member who has never been to Wildacres Workshop, has been a member for at least a year, and has been active in club affairs, especially at our annual show. Nominations are to be submitted to the Board. Any member may make a nomination, including for themselves. Reimbursement is made upon successful completion of the workshop. If interested in Spring session, apply to Andy Celmer by March 1st 2013.

The board will consider the applications and act before the next Wildacres session.

(Watch <<http://www.amfed.org/efmls/newsletters.htm>> for detailed information about the Spring session when it becomes available.)

CONGRATULATIONS TO CONTINUING OFFICERS

Re-elected at the November meeting for the 2013 calendar year were:

President: Andy Celmer

Vice President: Chris Luzier

Secretary: Jeff Cessna

Treasurer: Andy Muir

Our thanks to this seasoned team for agreeing to serve another year. You offer outstanding leadership!



Limonite always has it before. Beryl has it behind. Quartz has never had it at all. Girls can have it only once. Boys don't need it. Member, Ruth Miller has it twice in succession. The Geologist Dr. Lowell of Harvard has it twice as bad at the end as at the beginning.
Do you know what it is? Answer: The letter "L."

REGULAR MEETING MINUTES: The November 12, 2012 meeting was called to order by Vice-President Chris Luzier at 7:47 pm, with approximately 74 people attending. It was M/S/P to approve the minutes of the October 8, 2011 regular meeting and the October 15, 2011 Board of Directors meeting.

Treasurer: Andy Muir discussed the preliminary results of the auction of the donated Kent material. He reported enthusiastic participation, but low turnout. Despite the turnout the sales approached pre-auction expectations. He thanks those who helped for their participation. Andy also reported on the clubs financial status, with income from memberships, dealers, and the auction. Expenses were reported as the auction venue rental and travel reimbursements for the EFMLS convention.

Field Trips: Jonathan Harris discussed the recent trip to Texas quarry with participants finding dravite and tremolite among other specimens. He also discussed upcoming trips to fossil sites in Delaware and another to the Kensington Mica Mine.

Membership: It was M/S/P to approve membership for the following individuals – Hal Mangelson and Kendrick Spencer.

Show: Mark Dahlman gave the dates of the upcoming show and encouraged the members to volunteer. He suggested members think about what display to put in the show. He reported all of the dealers are lined up.

Guest Editor and EFMLS Liaison: Wendell Mohr requested those receiving the Rockhounder by mail consider email distribution due to upcoming postal rate increases. Black Hills Regional Park is developing their nature center and requested samples or fossils to put in a sandbox for kids to find. He discussed upcoming auctions, shows, and learning opportunities.

Andy Muir mentioned that the club was still in need of a new editor. Wendell has announced that December will be his final issue of the Rockhounder.

Presentation: Vice president Chris Luzier introduced the speaker for the evening, John Sampson White. John presented *Reminiscences Of A Very Old, Former Curator*. John detailed his long career with a story in pictures. This included acknowledgement of the serendipity involved throughout. His career was influenced by early interaction with Paul Desautels whom he used to ride his bike to visit when he was on the faculty of Towson Teachers College. This interaction eventually led after school to a job at the Smithsonian. This experience led his founding of the famous Mineralogical Record. This in turn led to a curator position at the Smithsonian. John told us about the interesting people, specimens, and collections he encountered along the way. Thanks John.



A call was made for nominations from the floor for candidates for the four officer positions. Hearing none, it was M/S/P to re-elect the current officers by acclamation.

The show table was administered by Andy Celmer. Due to illness Joel Rosen was not available, therefore there were no door prizes.

Meeting adjourned at 9:35 pm.

Jeff Cessna, Secretary.

BOARD MEETING MINUTES:

Board members present: Jeff Cessna, Jonathan Harris, Chris Luzier, Wendell Mohr, Andy Muir, Pat Repik-Byrne and Joel Rosen. Non-Board Member present: Mark Dahlman. Board members not present: Doug Baum, Andy Celmer, Rod Towers. Treasurer Andy Muir called the November 19, 2011 meeting to order at 7:41 pm.

Treasurer: Andy Muir reported on the sales and expenses from the club auction of the Ray Kent material. It was M/S/P to return 25% of the gross sales dollars to the donor. The proposed budget for the year was discussed. A final version will be distributed by email for voting. Andy will prepare a profit and loss statement.

Guest Editor and EFMLS Liaison: Plans for the holiday party were discussed. Pat Repik-Byrne will bring napkins, cups, plates, and utensils. Doug Baum will be requested to bring the punch bowl. Mark Dahlman will bring punch. Andy Muir will bring coffee, tea, hot chocolate, sugar, and creamer. Wendell Mohr will bring large water heater. It was decided there would be no board meeting in December.

The editor position was discussed looking at the possibility of defining essential duties, splitting duties among a team, and the possibility of accommodating potential editors attending board meetings by conference call or video conference. Wendell noted that the editor position was appointed by the President. Wendell offered to continue to provide articles on web sites.

Show: Pat Repik-Byrne will do short presentation at December meeting introducing volunteer opportunities for the show. A volunteer is still needed to fill the position of Demonstrations coordinator. Pat will fill in as necessary. Show flyers were distributed at the Northern Virginia Mineral Club Show. Joel Rosen will prepare a current estimate for replacement of display case front windows.

Field Trips: Jonathan Harris discussed upcoming trips and possible plans. Outdoor trips will resume in the spring.

Property: Joel Rosen requested funding to purchase general meeting door prize material. It was M/S/P to authorize up to \$1250 for the purchase of a year's worth of door prizes. It was reported that John White donated two books for door prizes.

The meeting was adjourned at 10:08 pm.

Jeff Cessna, Secretary

MEET YOUR NEW EDITOR We are thankful that Kristin Lolmaugh has graciously accepted the role of Editor for the Rockhounder. Her sister, member Donna Rimar, introduced her to our group. She has been a jewelry maker for 30-40 years, mostly working with beads, findings and crystals. Kristin has enjoyed collecting field trips to remote areas. At our November meeting she showed a rough moonstone and large sized cab she cut herself and can be justly proud. (See Page 8.) She particularly enjoys the history of how stones have been used through the ages.



Photo by W. Mohr

Although her parents live "down the street" from the Rockville Senior Center, she lives about an hour's drive away in Arnold, near Annapolis MD.

Kristin grew up enjoying ballet as a youth and later country western dancing. She comes with experience, having edited newsletters for several non-profit groups. Thanks again, Kristin, for stepping forward to volunteer.

December 15, 2012, Saturday, Kensington Mica Mine. Meet at 10am at the Kemp Mill Shopping Center on Lamberton Drive. Directions: From I-495, take exit 30A MD 29 towards Columbia. Make a right onto University Blvd (MD 193) going East and then make the U-turn at Williamsburg Drive so that you head towards Wheaton on University Blvd. Go about 1.7 Miles. Make a right at Arcola (just past Northwood High and just before some tall apartments). Go 0.4 miles. At Lamberton, make a left into the shopping center. Alternate Route: Go East on Randolph Rd from Rockville to MD 97 (Georgia Ave). Make a **right** on Georgia Avenue towards Silver Spring. Go 0.8 miles. Make a **left** onto Arcola. Go 1.5 miles. Make a **right** onto Lamberton and into the shopping center.



This will be a combined trip with the Maryland Geological Society. The mine, now on Maryland National Capital Park and Planning Commission land, now sits as land fill. A small stream runs through the former dumps. Large Almandine Garnets may be the more common find and on occasion, splays of Schorl. Gerald has found an almost clear crystal of Topaz nearby. This will be surface collecting, only. A trip sign up is required and will be limited to 5 members. Please contact the leader, Gerald Elgert, at <Isaiah.423@juno.com> or at home 301 681 5720.

February 2, 2013, Saturday 9am. James Madison University Department of Geology and Environmental Science and Mineral Museum, hosted by Professor Lance Kearns. Last years trip was so successful we have had requests for another trip!

Professor Kearns is a valued link between hobbieist and professional geologists. How have many of our seasoned collectors identified the rich variety of local minerals? --- Lance Kearns. For those who like machines more than experts, Professor Kearns has indicated that the X-ray diffraction machine and Ramen Spectrometer will be available. There is some chance that the LEDS/SEM lab (Low energy electron diffraction and Scanning Electron Microscope) will be open. And of course the JMU mineral museum.

Signup by January 25, 2011 is required to give Professor Kearns a correct headcount. Please signup earlier if possible by responding to Jonathan Harris at <jgharris7@gmail.com> including "James Madison University" in the subject line.



Go Rockhounds!

Directions: Go West on I-66 to I-81 South. Get off I-81 at Exit 245. Turn **RIGHT** onto Port Republic Road proceeding to S. Main St. (VA 11) and turn right at the light. Proceed northward on S. Main St. to the 3rd traffic light - turn left onto Cantrell Ave. Proceed over the bridge to traffic light on South High St. (VA 42) Memorial Hall (the old Harrisonburg High School) is directly in front of you. Go straight into the parking lot. The Mineral Museum is around the building to the left (south side) along Grace Street, entrance "E" to the building. After entering the building make an immediate right. The museum is at the end of the hall. Travel Time---about 2 hours and 30 minutes from Rockville, MD

Signs we would like to see at the quarries: **OPEN SEVEN DAYS A WEEK AND WEEKENDS** Dream on!

POSTAL RATES are set to again rise on January 27, 2013. It is time once more to think about the cost of producing and mailing hard copies of the newsletter. Only about 10 members have no access to e-mail. But because many people request to receive the Rockhounder by both e-mail and "snail mail" over 50 copies are mailed each issue. This is at considerable cost for printing and mailing. If YOU can dispense with a mailed copy and receive the Rockhounder only by e-mail only it will represent a considerable saving for the society. Let the new Editor know.

FUTURE ROCKHOUNDS OF AMERICA (The MOCKS) [AGES 10-15](#)

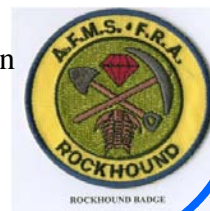
Next Meeting Date: December 10, 2012. **Meeting time:** 7:45 - 9:00 pm.

Meeting Location: Sunroom Cafeteria at the Rockville Senior Center

November 12th Meeting: We completed the magnetism requirement for the “special effects” badge by learning why magnets form and how they work. We discussed how important magnetism is to our daily lives -- how magnetism is used in navigation and, more importantly, the protection that the Earth’s magnetic field provides us. We reviewed the structure of the earth, talked about polarity reversals and how magnetism was critical in our first understanding of plate tectonics and provided the evidence needed for understanding sea floor spreading. We then had a bit of fun with iron filings and magnets – the MOCKS are a creative group! Each participant went home with a magnetic specimen and a magnet.

In order to complete the special effects badge, members must provide a “demonstration” of mineral special effects. The MOCKS have decided to do so at our annual show by taking turns working the touch table.

December 10th Meeting: The MOCKS will have a “Yankee Mineral Swap.” (Specimens provided by the FRA; MOCKS do not need to bring in anything) and then We will join the main group and enjoy finger foods provided by the membership.



For more information on the Future Rockhounds of America program, please contact Holly McNeil at <fra_advisor@glmsmc.com> or 301-605-7179.

AN EASY WAY TO MAKE FLUORESCENT LABELS By Rudy Bland.

Adapted from The Mineral Mouse, Nov 2012.

Last year I was given the task to set up a fluorescent display for a Richmond G&M Society Exhibit. I faced the task of developing a fluorescent label.

Since inkjet printers do not have fluorescent ink plus the fact that I only had a laser printer, I spent some time pondering over just how I would accomplish such a task. By this time I had mastered the task of working with text boxes. Since most laser jet card stock is basically cotton, it fluoresced bright blue-white, it gave me an idea. What if I used a white font along with a black fill for a Text Box? The Border for the text box was a 6pt. Line. A second text box was inserted above the main text box. This smaller text box could be folded down to create a free standing label. The border of this text was a solid 3 pt. border. The results were astounding!

There was still a drawback in my idea, however. In order to print out several sheets of labels on my printer would take too much toner and might not have a uniform black fill. The solution was to make



the labels as a Word document, save it as PDF document, and take to a copy store to print it on Bristol White 67 pound cardstock. I also requested that they set the machine to the darkest setting.



Sample Label.

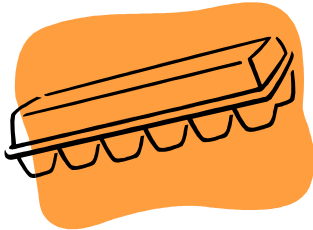
MINI MINERS Ages 6 - 9

Next Meeting Date: December 12th, 2012

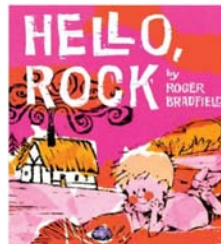
Meeting time: 7:00 - 8:00 pm

Location: The Card Room at the Rockville Senior Center

At the last Mini Miner's meeting we learned about Gems and Gemstones. At the next month's meeting on December 10th, we will be working on putting together a Mini Miner collection. Be sure to bring an empty egg carton and a few sample rocks.



Please contact Linda Smith at <Tunacat107@aol.com> or 301-530-5007 with any questions.



SHOW TABLE: November 12th, 2012. Thanks to those who bring items for sharing at the meetings.

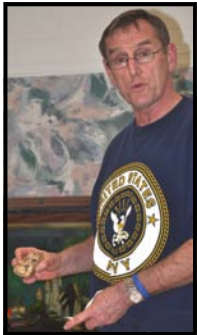
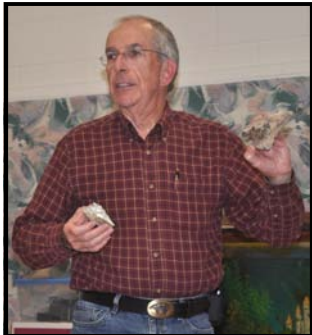
<u>Exhibitor</u>	<u>Specimen (s)</u>	<u>Locality</u>
Andy Celmer	Agatized Coral	West Coast of FL →
Jeff Cessna	Hardystonite, Willemite	Franklin NJ
	Calcite and Willemite	Sterling Hill NJ
George Durland	Talc on Franklinite	Franklin NJ
	Wollastonite, Barite on Calcite	Franklin NJ
Dave Fryauff	Ilmenite, Rutile*	U.S. Silica Quarry, Montpelier VA
Ryan Gunnison	Devonian Flexicalymene Trilobite	Atlas Mountains, Morocco
Jonathan Harris	Rutile, Rutile and Feldspar*	U.S. Silica Quarry, Montpelier VA
Diane Leaman	Agate	CO?
Gary Leaman	Green Beryl	Alstead NH →
Kristin Lolmaugh	Moonstone rough and Cabochon*	Beaverdam VA
Andy Muir	Calcite (Fl.)	China
	Hyalite Opal (Fl.) on Quartz*	Auburn ME
	Calcite, Fluorite, etc. (Fl.)	Columbia Mine, Marion KY
Tim Parnell	Garnierite*	Adams Brook, Newfane VT
	Drusy Quartz on Chalcedony*	Adams Brook, Newfane VT
Conrad Smith	Rutile, Ilmenite, Biotite*	U.S. Silica Quarry, Montpelier VA
Earl Smith	Cryolite	Ivigtut, Greenland
Rod Towers	Spinel, Humite, Pargasite	Lục Yên, Vietnam
Jeremy Yee	Shark Teeth, other items	Calvert Cliffs MD



Photographs by W. Mohr

*Self-collected or self made

Participate at the Show Table to increase your chances of winning a prize!



Join Us for Our 22nd Annual
Mineral, Fossil & Jewelry Sale
Sat., December 8, 2012 - One Day Only
10:00 am - 4:30 pm. Free Admission
Holiday Inn Hotel, 9615 Deereco Road-Timonium,
MD. Just north of Towson, Baltimore: 1-83, Exit 17,
 Padonia Rd. (Turn right & right again on Deereco)
FEATURING THESE SUPER DEALERS:
HIGHLAND ROCK & FOSSILS, MIKE'S
MINERALS, OCTAHEDRON MINERALS/JEWELRY,
PARKER MINERALS

As is customary we are not endorsing this commercial show but bring information for you.

23rd Annual
Mineral, Jewelry, & Fossil Show
Saturday, February 16, 2013 | 10am - 5pm

The Show Place Arena
 14900 Pennsylvania Ave. | Upper Marlboro, MD 20772
Admission: \$3/person
 Children 6 & under free!

Exhibits and Vendors:
 Rough, polished, & faceted stones
 Fossils, minerals & geodes
 Tools & supplies
 Beads & findings
 Original jewelry designs

Demonstrations:
 Bead stringing, wire wrapping, gold panning and more.

WWW.SMRMC.ORG

For more information, or to request a vendor application, please contact Michael Patterson at 301-297-4575.

Parks & Recreation
 live more, play more
 www.ppparks.com

The Delaware Mineralogical Society
 Presents their **50th Annual** Gem, Mineral & Fossil Show

An Educational Experience For the Entire Family

Ticket can be Duplicated

Come See Our Golden Anniversary Show

Outstanding Minerals & Fossil Dealers
 Gem, Jewelry & Lapidary Supplies
 Demonstrations, Exhibits & Door Prizes
 Jr. Booth for Kids

Delaware Technical & Community College
 400 Churchmans Road (Rt 58)
 Newark, (Stanton), DE @ Exit 4B, I-95

Adults: \$6.00 (\$1.00 off with this coupon)
 Seniors: \$5.00
 Juniors (age 12-16): \$4.00
 FREE to Children and all Scouts in Uniform

March 2-3, 2013
 Saturday 10:00 am - 6:00 pm
 Sunday 11:00 am - 5:00 pm

Additional Information @ www.delministry.net

OUR SHOW! Save the dates and stay tuned for more information and to volunteer. Start planning your exhibit or demonstration NOW.

49th ANNUAL GEM-MINERAL-FOSSIL SHOW

MONTGOMERY COUNTY FAIRGROUNDS

MAR. 16 & MAR. 17, 2013
SAT. 10 AM-6 PM, SUN. 11 AM-5 PM

Presented by the Gem, Lapidary, & Mineral Society of Mont. Co., MD.

16 CHESTNUT STREET GAITHERSBURG, MARYLAND

Adult Admission \$6.00
 Group With This Ad, All \$5.00
 Under Age 12 Free

Featuring World-Wide Treasures *Over 40 Exhibits *Door Prizes *Demonstrations
 *Free Workshop *Free Specimens for the Kids *Free Kid's Mini Mine *Food For Sale
 *Fluorescent Minerals *Raffle *Information Center *Plenty of Free Parking

Over 20 Dealers From Around the Country:
 *Fossils *Jewelry *Findings *Beads *Minerals *Geodes
 *Gifts *Shells *Slabs *Fluorescents *Books *Equipment
 *Carvings *Meteorites *Jewelry boxes *New age items
 *Gems & Gem Rough *And Much More

Website—WWW.GLMSMC.COM

Income supports scholarships for college students in earth sciences, Science Fair awards, and gifts to the Smithsonian Institution's Gem and Mineral Hall.

June 2-3, 2013 63rd EFMLS Convention & Show hosted by the Island Rockhounds and Suffolk Gem & Mineral Club, Plainview NY. EFMLS Meeting Friday May 31.

A boring geology lecture & biscuits are both improved by shortening.



SOCIETY LIBRARY Go to the Society web site at <www.glmsmc.com/> and click on “Library” to see a complete listing of materials available for lending to all members, juniors included (with parents



responsible). Nearly everything in earth science is covered, including videos. You will find books on fossils, minerals, gems, geology and more. To utilize the library materials get in touch with Jonathan Harris at 301 545 0808 or <jgharris7@gmail.com>. If you contact him before a meeting he can arrange to bring the requested material to the meeting and you may keep it out for one month until the next meeting, when it must be returned. Here is a great resource and most items are not available in the County Public Library system.

FOSSIL AUCTION The November 10th auction of the fossils of Ray Kent was successful. The unofficial tally is that we took in \$1358 and had only 9 lots unsold. We had a dozen bidders (5 of whom were helping with the auction). Most attendees were members of GLMSMC.

Ray Kent said a few words at the beginning of the auction and then left before the bidding started. Thanks to Ray for offering his material



Photos R.Weller Cochise College

for sale. He also donated quite a number of MD Geological Survey bulletins on MD fossils and, keyed to the books, a number of fossils of which Holly McNeil will make use.

Chris Luzier and Jonathan Harris did great as the auctioneers, while Jeff Cessna and Andy Celmer kept the material moving smoothly. Kudos to the members who worked so hard: Doug Baum, Andy Celmer, Jeff Cessna, Pat Cronin, Mark Dahlman, Jonathan Harris, Chris Luzier, Wendell Mohr, and Andy Muir.

2012 EFMLS CONVENTION AND SHOW For a fine extensive report by Sheryl Sims see: <<http://www.smrnc.org/uploads/3/4/4/8/3448020/1213specialreport.pdf>>

SAFETY EXERCISE? ABSOLUTLEY! EXERCISE? Adapted from Don Monroe, SEFMS Safety Chair from Lodestar, February 2010

Almost every newspaper or magazine or television advertisement extols the virtues of exercise and usually tries to sell you some sort of equipment. Now the equipment is probably not all bad but may not be necessary. Many forms of exercise such as walking or swimming may be accomplished without any significant investment.

Who really needs to exercise? Basically all of us need to exercise but it takes a lot of commitment to do enough. Think about young children. If we can keep them off the couch and out from in front of the television, they can burn up a lot of energy and hopefully not do too much damage around the house. It often takes a lot of imagination to challenge little ones.

To get pre-teens to exercise, is often more of a challenge because they often have a short attention span and you may need to constantly come up with new ideas or different games. All of you who have dealt with grandchildren are probably aware of just what it takes to keep them doing new and different things. Teenagers present the same issues but just more of them.

As you look through this article you begin to see a pattern. As the participants get older, the job gets more difficult.

Well you haven't seen anything yet. Just wait until we get to adults and, even worse, senior citizens. Many of us have been in a situation where we had to amuse our parents. Mercy, can they be demanding! They often have the attention span of a child but are quite comfortable telling us what to do and how to do it. Winter blahs? All of you, just get out there and exercise.



If One Can Enjoy These Sites,

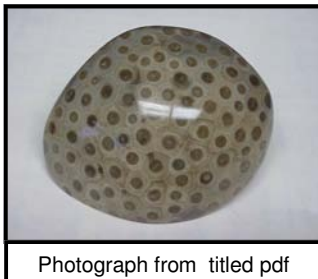
WEB SITES

Wyoming Gemstones at <<http://wygemstones.blogspot.com/>> a blog by W. Dan Hausel. He is a research geologist and spent 30 years in WY, now living in Gilbert AZ. He is very talented and his site has enough to keep you reading for a long time and includes articles about gold, barite, and other minerals and geology as well as the titled gems. Noodle around the site exploring the entry points along the right of the home page to see slideshows and articles. No endorsement is made for his books for sale.



Photo from by LinkedIn.com

- All worthwhile gemstone rough is a good 2500 miles away at the end of a dirt road well above 10,000 feet elevation.
- Shopping to get something for my wife for Christmas, I asked her to give me her sizes. "If it's clothes, I'd like small, If it is Wyoming rubies, sapphires or emeralds, I'd like the large." she said ●



Photograph from titled pdf

The Petosky Stone, by the MI Department of Environmental Quality, Geological Survey Division, a pdf document about the *Hexagonaria percarinata* Coral, <http://www.michigan.gov/documents/deq/ogs-gimdl-GGPS_263213_7.pdf>, gives the History, formation, geology, and information about polishing them.

- A lapidary gets a good polish on the stone, lapidary definition - A Scandinavian milk parlor.
- One way to tell if your Petosky Stone is a fake: It has "Made in Morocco" stamped on the back. ●

Tallest Sand Dunes in North America, is a geology site by the National Park Service about the Great Sand Dunes National Park and Preserve Near Mosca Colorado. See <<http://www.nps.gov/grsa/index.htm>> Take a look at "Photos and Multimedia" and "History and Culture." I was attracted to "Nature and Science" which has information on the formation of the dunes with great animations, basic geology, and a note about the "singing sands."



Photograph from web site by NPS/Patrick Myers

- Q. What do you have when a mineral collector is buried up to his neck in sand? A. Not enough sand.
- The sand collector's society now has its own newsletter - The sandpaper. ●

DAFFY - NITIONS



- Agate - The door in a fence
- Cabochon - A small French taxi
- Faceting - A complex way to ruin a good jewel
- Facet - Australians' answer to a water tap
- Field Trip - When you fall down outside
- Findings - Stuff you find!
- Flint knapping - Sleepy stone
- Fossils - People on social security
- Garnet - Something you catch a long fish in
- Geode - A poem to G
- Grinding Wheel - A bearing going out in your old truck

- Inclusion - Unwanted third person on a date
- Lap - Motherly space between trunk and limbs
- Malachite - One of the tribes of Israel
- Mexican Lace - Fiesta clothing
- Petrified Wood - Wood that has been frightened
- Pseudo morph - Anything pretending to be a morph
- Quartz - A bottle size that milk comes in
- Rhodochrosite - Highway where crows can be seen
- Rock hammer -The drummer in a modern band
- Semi-precious - Daddy's little girl
- Silver Solder - A millionaire's instant lawn machine
- Template - A little house of worship
- Trim Saw - A machine that takes the fat off

ROCKHOUNDS-YOU CAN'T TAKE IT WITH YOU! By Trudy Martin Scribe 10&11/08

There is no way, when your number comes up, that you can take your Rock Collection with you when you go to your heavenly reward. It has to stay behind for your family to dispose of. What are they going to do? Most of them have no idea what the rocks are or what they are worth. As the old saying goes, They will probably throw out the baby with the bath water! They have no idea what is gem material and what is leaverite. It is up to YOU to make sure your collection is correctly identified.

PLEASE, put labels or stickers on your rock, slices, faceting rough, minerals, fossils and silver. An uninformed person can't tell the difference between a piece a sodalite and a piece of lapis. Nor can they tell the difference between genuine, gem quality faceting rough and glass. To the novice, slices of jasper are just that – jasper. They can't identify Bruno Jasper, Biggs Jasper, Rainforest Jasper from the run-of-mill jaspers found in the local gravel pit. When it comes to Agate – well, that's a horse of a different color! Some agate is priceless because the area it was found in is no longer available for hunting.

Minerals and Fossils are another major problem. If they don't have a label or a sticker to identify what they are and where they are from, the family will be at a loss to put a value on the specimens. Other collectors, museums and dealers, will be hesitant about purchasing the collection if it is not properly identified.

So, Rockhounds, it is up to you, while you are still here on earth, to properly identify your rocks, minerals, fossils, gemstones and jewelry. If specific pieces are to go to specific relatives or organizations, write it down. An inventory sheet with approximate dollar value would be helpful, too. Don't put it off – do it now – while you are still here. Your family will thank you when the time comes.

FIELD TRIPS FOR 2012

Article and Photographs By Jonathan Harris, Field Trip Chairman

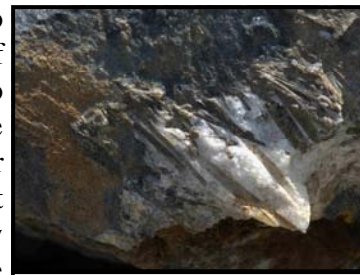
March opened with a visit to Vulcan Manassas Quarry where members continue to look for zeolites, apophyllite, and prehnite. We continued to dig up interested specimens; some included phosphorescent calcite.

Gettysburg Quarry and Haines-Kibblehouse Penn-MD Materials quarry became our two April trips. These are quite different in their offerings. At Gettysburg, diabase magma intruded and cooked a mudstone into hornfels creating solid aggregate for the construction industry and zeolite filled pockets for us collectors. A recent blast had exposed a stilbite rich layer which several of us collected. After some of the specimens seemed to decay, I realized that it was also rich in laumontite and promptly preserved some remaining ones by soaking in a 10% solution of white glue. Others found some small epidote crystals in lower levels of the quarry.

Penn-MD materials cuts through the serpentine band and feeds the lapidary enthusiasts with various types of serpentine, sometimes including translucent green Williamsite. We also found black and white chalcedony (again great for the gem-cutters), botryoidal magnesite, brucite, chromite, and a form of serpentine that formed needle like splinters to remind rockhounds to wear their gloves.

In May we had a fruitful visit to the Lafarge-Churchville quarry, where the deposit is mostly gneiss (Pun intended.) One of the benches continued to yield abundant chabazite. The blast debris also yielded some nice pockets of other zeolites--either stilbite or stellerite (Stellerite has only calcium and no sodium; special laboratory tests are needed for this distinction). One of the most impressive finds were a few boulders at the bottom level with finger length epidotes. Alas, missing from the boulder with some of the longest crystals was room to place a hammer and chisel in a fashion that would allow their removal. Perhaps a contortionist could have helped solve this; but we did not have one and those crystals remained in the quarry. Another interesting find was a boulder with shiny molybdenite.

Continued on Page 13.



**Epidotes at the Lafarge
Churchville Quarry**

FIELD TRIPS FOR 2012 (Continued from Page 12)

May, July (Thanks Ted Carver from the NOVA mineral club for including us), and September all had opportunities to visit National Limestone's Mt. Pleasant Mills and Middleburg Quarries. One collector found fluorescent hydrozincite and sphalerite in some of the boulders. Others continued to find nice wavelite, strontianite, calcite, and fluorite specimens. On our May trip one group spent some hours devouring a boulder that featured numerous cavities and fissures coated with delicate strontianite crystals.

June featured a trip to Vulcan's Havre De Grace Quarry, a gneiss deposit similar to Churchville's. We continued to find pyrite cubes and masses and epidote there. Past trips have yielded very nice sphene and feldspar crystals.

In September we returned to Willis Mountain, a large kyanite mine owned by Virginia kyanite. Of course one of the features of this site is the kyanite. Rutile, apatite, and a host of other accessory minerals are sometimes extracted. The more sturdy compact quartz-kyanite matrix can be polished into cabochons or even kitchen countertops. Some of the quartz-kyanite mixture fluoresces a dim blue white or yellow. When I brought home one piece, it had small patches of a clear mineral that fluoresced a bright blue-white.



Digging For Rutile at US Silica Montpelier VA Quarry



Conrad Smith At U.S. Silica



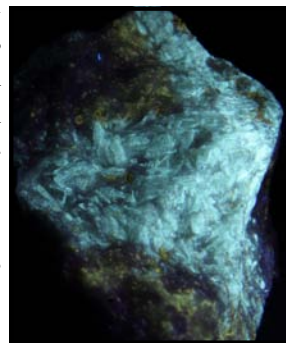
Red Rutile Found in the Ground At US Silica Montpelier VA Quarry

The U. S. Silica's Montpelier plant, our October site, featured samples of moonstone, rutile, and illemnite. Dave Fryauff reports that under UV light, he was able to find small zircons fluorescing a bright yellow. Our host, Elmo Hall, gave us an interesting and brief description of the plant and its products. The Montpelier plant began as a titanium mine; but as other sources became more economical, it has switched to mining the feldspar rich aplite. After crushing and grinding the rock and removing the titanium and iron rich dark matter with magnetic separators, they produce a fine aluminum rich feldspar sand which glass manufacturers use to control the properties of their product. The dark material is currently waste; however, U. S. Silica has been looking into selling it for its titanium content.



Tremolite in Marble from Lafarge Texas Quarry

Finally in November, Sean Frisch at Lafarge, led us into the large Texas quarry on a small bus. This time we continued to find phlogopite, dravite, calcite, scapolite, and tremolite. A couple of tremolite samples fluoresce a brilliant bluish-white. Some of the dravites and phlogopite crystals fluoresce yellow.



Tremolite (Fl. bluish-white) in Marble with Phlogopite flakes (Fl. yellow) Lafarge Texas Quarry

BOARD OF DIRECTORS

President– Andy Celmer, 4798 Mid County Court, Monrovia MD 21770-9417	301 865 4442
Vice President- Chris Luzier, 847 Springdale Drive, Millersville MD 21108-1436	443 995 5363
Secretary- Jeff Cessna, 12116 Cliftdale Drive, Silver Spring MD 20904-1941	301 680 7963
Treasurer- Andy Muir, 17949 Hazelcrest Drive, Gaithersburg MD 20877-3761	301 990 1370
Junior Advisor- Rod Towers, 19609 Gunners Branch. Rd., Germantown MD 20876-2738	301 972 1264
Field Trip Chairman- Jonathan Harris, 11932 Goya Drive, Potomac MD 20854-3313	301 545 0808
Membership Chairman- Doug Baum, 11205 Golden Meadow Ct., Germantown MD 20876-1740	301 515 4641
Show Chairperson- Pat Repik-Byrne, 9 Starlight Court, Potomac MD 20854-2658	301 279 5962
Property Manager- Joel Rosen, 833 Rampart Way, Union Bridge MD 21791-9325	410 775 7937
Immediate Past President- Eric Kindahl, 301 Violet Court, Mount Airy MD 21771-5206	301 820 2161
EFMLS Liaison- Wendell Mohr, 9509 Emory Grove Road, Gaithersburg MD 20877-3501	301 926 7190
Bulletin Editor Pro-Tem - Wendell Mohr, 9509 Emory Grove Road, Gaithersburg MD 20877-3501	301 926 7190

Life Members: Jack Busch, Larry Harrison, Wendell Mohr, and Juan Proaño

Society Address: Gem, Lapidary, and Mineral Society of Montgomery County MD., Inc.
 P. O. Box 444, Gaithersburg MD 20884-0444 Web Site: <http://www.glmismc.com/>
 All Society correspondence is to be sent to this address except that which is intended for the Rockhounder and its editor. Such items are to be sent to the editor's home address.



Permission to copy material printed herein, except specifically copyrighted items, is granted, provided credit is given.



Award Winning
 Bulletin
 EFMLS, AFMS



**TIME SENSITIVE
 DATED MATERIAL
 FIRST CLASS MAIL**



THE ROCKHOUNDER
 Gem, Lapidary, and Mineral Society
 of Montgomery County, MD, Inc.
 Wendell C. Mohr
 9509 Emory Grove Road
 Gaithersburg MD 20877-3501

